



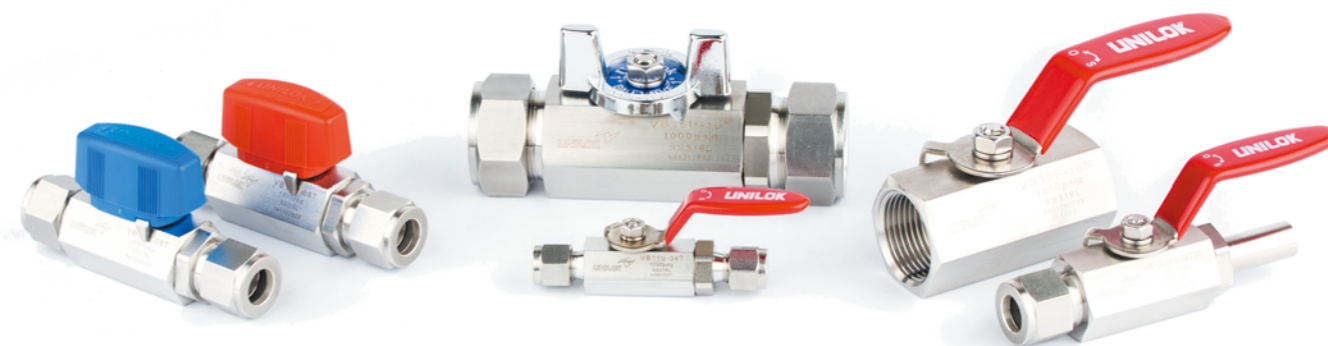
Instrument

Valves

Ball Valves	114	Manifolds Valves	197
Needle Valves	157	Relief Valves	217
Metering Valves	179	Other Valves	223
Check Valves	187		

INSTRUMENT

Hex Ball Valves VB1



Hex Ball Valves VB1

CONTENTS

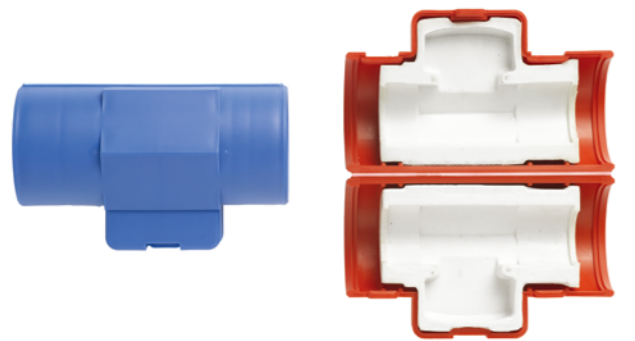
Application	116	Materials of Construction	117
Protection Cover	116	Important Notification	117
Features	116	How To Order	118
Type of Handle	116	Ordering Information & Dimension	119
Testing	117	Protection Cover Size	122
Cleaning	117	Pressure-Temperature Ratings	122

Application

Steam, water, air lines in onshore and offshore application
Utility lines in semiconductor and display panel industries.

Protection Cover

Maintain the temperature of fluids, keep handle position and distinguish in-out lines visually, to keep the temperature of flow and to distinguish the line.
VB1 series ball valve with both 3/4" UNILOK end connection and plastic bar handle. 1/2" is available only with the different size of inner cover.



Features

- Pressure rating up to 1000psig (69bar) with PTFE seats and 2000psig(137bar) with TFM only for VB1F series ball valves with lever handle
- Easy to operate owing to low torque quarter turn actuation
- All valve body's made from 316SS bar stock to secure the high integrity
- Compact designed one piece hexagonal body
- Micro finished 316SS balls not to occur the leakage
- Blow-out proof design with internally loaded stem
- Various selection of handles
- Wide choice of end connections : UNILOK tube fittings, Female NPT or ISO7/1(PT) threads, Weld Systems

Type of Handle



Bar handles offer visual distinguishment of in-out lines at high purity applications.

Testing

Every valve is 100% factory tested with air and nitrogen at 1000psig(69bar) for leakage at the seat and packing. Each test is performed to a maximum allowable leak rate of 0.1scc/min.

Cleaning

UNILOK valves are free from machine oils, loose particles and grease throughout the close cleaning process.
The special cleaning for high purity application is available upon request.

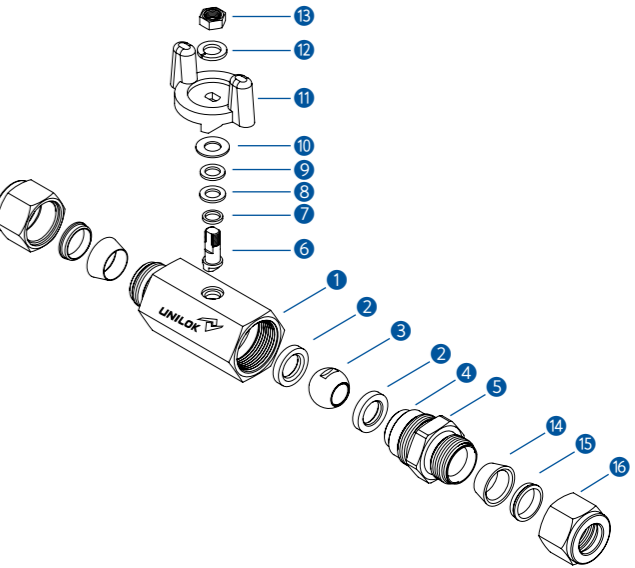
Important Notification

UNILOK ball valves are designed to be operated in a fully open or fully closed position.
The packing adjustment may be required during the valve's service life.
Proper installation, materials compatibility, operation and maintenance of these valves are the responsibility of the user. The total system design must be taken into consideration to ensure optimal performance and safety.

Materials of Construction

No.	Description	Materials
1	Body	316SS
2	Ball Seat	Reinforced PTFE
3	Ball	316SS
4	O-Ring	Viton
5	Connector	316SS
6	Stem	316SS
7	Inner Packing	PTFE
8	Outer Packing	PTFE
9	Gland	316SS
10	Washer	316SS
11	Handle	Zinc
12	Spring Washer	304SS
13	Nut	304SS
14	Front Ferrule	316SS
15	Back Ferrule	316SS
16	Nut	316SS

Handle Materials :
Lever - 304SS+PVC Coat
Bar - Nylon



How To Order

UNILOK VB1 series ball valves are ordered by part number as shown below.

Example: The following part number, *VB1U-04T-SS-B* is designated for VB1 series ball valve with both 1/4" UNILOK tube fitting, 316SS, PTFE seat, butterfly handle.

VUNILOK Valve

B1Valve Type

UConnection type

-

04TConnection Size

-

SSBody Materials

-

BHandle Type

-

Seat Materials

Connection Type	
U	UNILOK Tube Fitting
F	Female NPT or ISO7/1(PT)
WB-*T	Butt Weld-Tube
WB-*P	Butt Weld-Pipe

Connection Size						
Fractional(Inch) Tube O.D. Designation						
Tube O.D.	inch	1/4	3/8	1/2	3/4	1
	mm	6.35	9.52	12.70	19.05	25.40
Designator		04T	06T	08T	12T	16T

Metric Tube O.D. Designation						
Tube O.D.	mm	6	8	10	12	25
Designator		M06T	M08T	M10T	M12T	M25T

Pipe Size O.D. Designation				
Pipe O.D.	Normal	15A	20A	25A
	mm	21.7	27.2	34.0
Designator		15A	20A	25A

Pipe Size Designation (NPT or ISO7/1-PT)						
Pipe Size	1/8	1/4	3/8	1/2	3/4	1
Designator	02N/R	04N/R	06N/R	08N/R	12N/R	16N/R

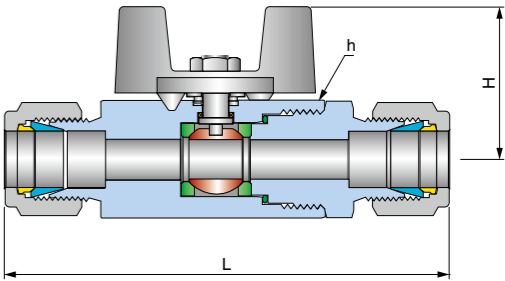
Hadle Type		
None	Lever Handle	
B	Butterfly Handle	
PR	Nylon Bar Handle	Red
PS		Blue
PB		Black

Seat Materials	
None	PTFE
TFM	TFM
PK	PEEK

VB1U series

(Both UNILOK Tube Fittings)

- Max Operating Pressure
1000psig (69bar) at 38 °C(100 °F) with PTFE seat
1000psig(69bar) at 170 °C(338 °F) with PEEK seat
- Connection Type
Both UNILOK tube fittings
- Handle Type
Lever, Butterfly and Bar



Ordering Information & Dimensions

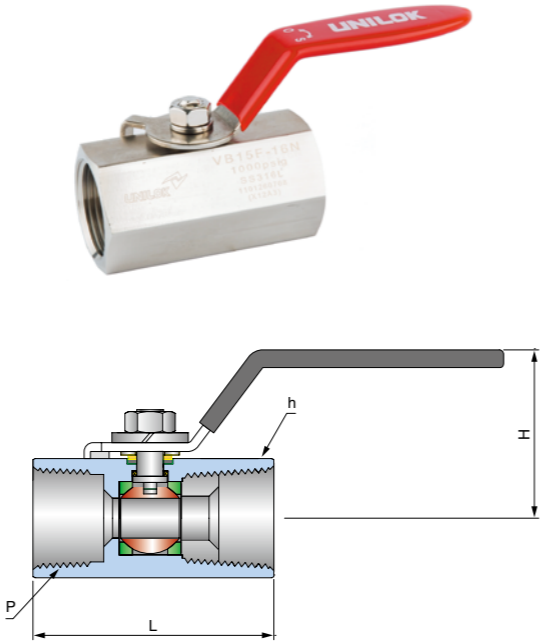
Part No.		End Connections		Orifice	Dimensions (mm)		
		Inlet	Outlet		h(Hex)	L	H
VB11	U-04T-	1/4" UNILOK		5.0	17.46	79.0	26.5
	U-M06T-	6mm UNILOK				82.0	
	U-M08T-	8mm UNILOK					
VB12	U-06T-	3/8" UNILOK		7.5	22.22	89.5	32.5
	U-M10T-	10mm UNILOK					
VB13	U-08T-	1/2" UNILOK		9.0	26.98	101.6	35.0
	U-M12T-	12mm UNILOK					
VB14	U-12T-	3/4" UNILOK		12.5	31.75	107.5	37.5
VB15	U-16T-	1" UNILOK		16.0	38.10	132.6	44.5
	U-M25T-	25mm UNILOK					

Dimensions are for reference only and are subject to change without prior notice.

VB1F series

(Both Female Threads)

- Max Operating Pressure
1000psig (69bar) at 38 °C(100 °F) with PTFE seat
2000psig(138bar) at 38 °C(100 °F) with TFM seat
- PEEK seats not applicable
- Connection Type
Both NPT or ISO7/1(PT) female threads
- Handle Type
Lever, Butterfly and Bar



Ordering Information & Dimensions

Part No.		End Connections "P"		Orifice	Dimensions (mm)		
		Inlet	Outlet		h(Hex)	L	H
VB11	F-04N-	1/4" Female NPT		5.0	17.46	40.0	29.0
VB12	F-06N-	3/8" Female NPT		7.5	22.22	45.0	35.7
VB13	F-08N-	1/2" Female NPT		9.0	26.98	54.5	38.1
VB14	F-12N-	3/4" Female NPT		12.5	31.75	61.0	44.5
VB15	F-16N-	1" Female NPT		16.0	38.10	75.0	48.0

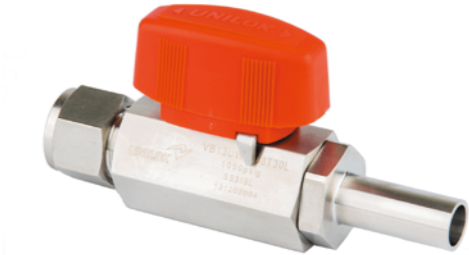
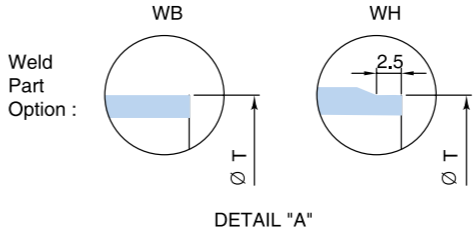
Female ISO7/1 Tapered Threads (PT) are available for all fractional sizes of VB1F series valves.
Add "R" as a suffix instead of "N".

Dimensions are for reference only and are subject to change without prior notice.

VB1W series

(Pipe or Tube Butt Weld and UNILOK Tube Fitting)

- Max Operating Pressure
1000psig (69bar) at 38 °C(100 °F) with PTFE seat
- Connection Type
Pipe Butt or Tube Butt Weld and
UNILOK Tube Fitting
- Handle Type
Lever, Butterfly and Bar



Ordering Information & Dimensions

Part No.		End Connections		Orifice	Dimensions (mm)			
		Inlet	Outlet		h(Hex)	L	L ₁	H
VB13	UWB-08T	1/2" Tube	1/2" UNILOK	9.0	26.98	109.7	30.0	41.6
VB14	UWB-12T	3/4" Tube	3/4" UNILOK	12.5	31.75	129.2	43.0	44.2
VB15	UWB-16T	1" Tube	1" UNILOK	16.0	38.10	137.3	30	53.8

Length of L1 can be adjusted upon the customer's request

Dimensions are for reference only and are subject to change without prior notice.

VB1 Protection Cover

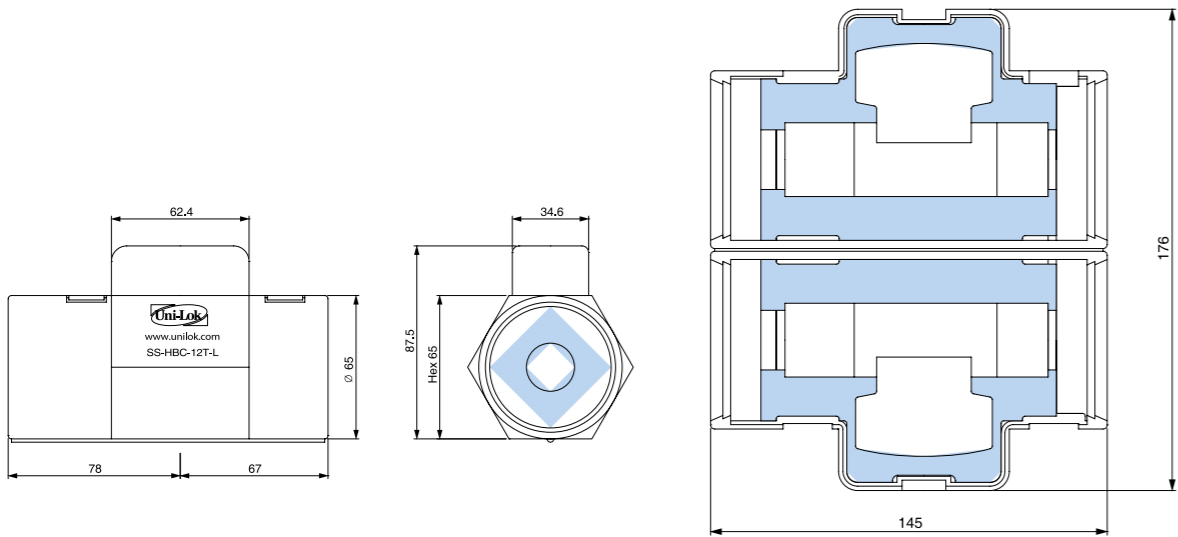
Maintain the temperature of fluids, keep handle position and distinguish in-out visually.

VB1 series ball valve with both 3/4" UNILOK end connection and plastic bar handle. 1/2" is available only with the different size of inner cover.

Ordering Number

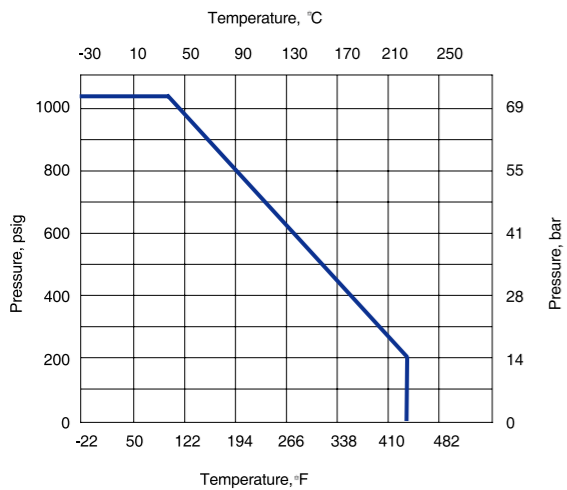
VB1-PC-R : Red

VB1-PC-S : Blue

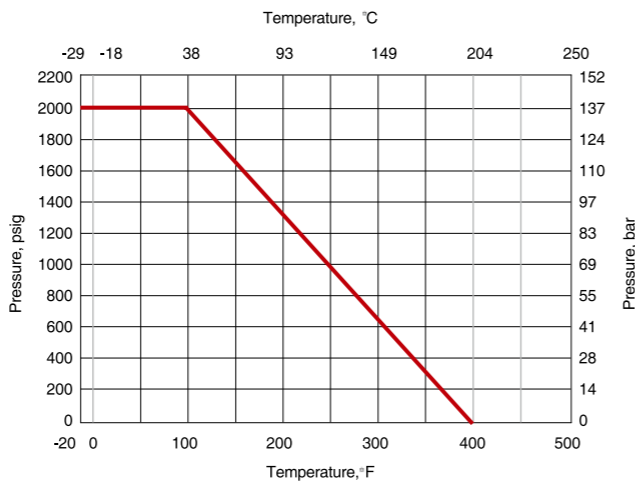


Pressure - Temperature Ratings

PTFE Seat



TFM Seat



Dimensions are for reference only and are subject to change without prior notice.

INSTRUMENT

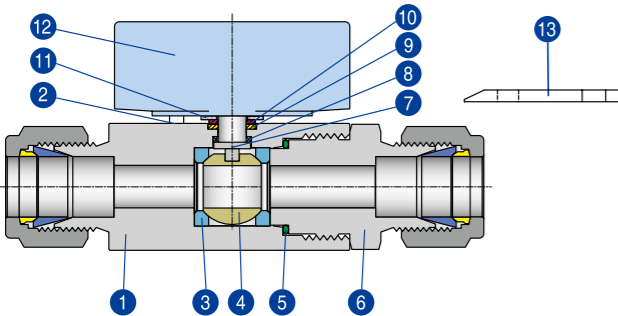
Master key Hex Ball Valves VBM1



Features

- Locking handle on open or Close Positions
- Body Materials : Standard 316 stainless steel
- Compact handle design
- Handle Low operating torques

Material of Construction



How To Order

UNILOK VBM1 series ball valves are ordered by part number as shown belows.

V

UNILOK Valve

BM1

Valve Type

U

Connection Type

-

08T

Connection Size

-

SS

Body Materials

-

Handle Color

-

Seat Materials

Valve Type	
BM1*	Master Key Hex Ball VALVE

Connection Type	
U	UNILOK Tube Fitting
F	Female NPT or ISO7/1(PT)
WB-	Butt Weld-Tube
WB-	Butt Weld-Pipe

Connection Size				
Fractional(Inch) Tube O.D. Designation				
Tube O.D.	inch	1/2	3/4	1
	mm	12.70	19.05	25.40
Designator		08T	12T	16T

Metric Tube O.D. Designation				
Tube O.D.	mm	12	20	25
Designator		M12T	M20T	M25T

Pipe Size Designation (NPT or ISO7/1-PT)			
Pipe Size	1/2	3/4	1
Designator	08N/R	12N/R	16N/R

Weld Size Designation			
Pipe Size	15A	20A	25A
Designator	15A	20A	25A

Handle Color	
S	BLUE
R	RED

Seat Materials	
None	PTFE
PK	PEEK

Testing

Every valve is 100% factory tested with air and nitrogen at 1000psig(69bar) for leakage at the seat and packing. Each test is performed to a maximum allowable leak rate of 0.1scc/min.

Materials

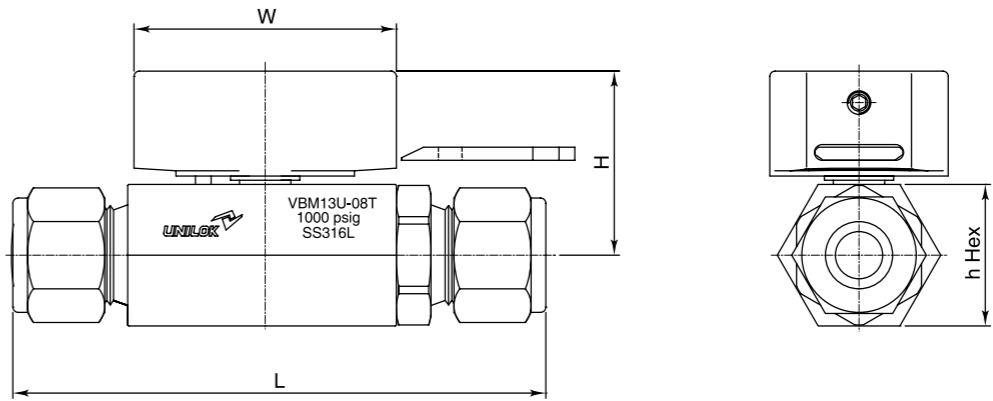
No.	Description	Materials
1	Body	316SS
2	Guide Pin	316 SS
3	Ball Seat	PTFE
4	Ball	316 SS
5	O-Ring	FKM
6	Connector	316SS
7	Stem	316SS
8	Inner Packing	PTFE
9	Outer Packing	PTFE
10	Gland	316SS
11	Washer	316SS
12	Handle	Zinc
13	Key	Zinc

Specifications

- Max Operating Pressure
1000 Psig (69 bar) at 38 °C(100 °F) with PTFE Seat
- Connection Type
UNILOK Tube Fittings
- Orifice
9.0mm to 16.0mm



Ordering Information & Dimensions



Part No.		End Connections		Orifice	Dimensions (mm)			
		Inlet	Outlet		h(Hex)	L	H	W
VBM13	U-08T	1/2" UNILOK		9.0	26.98	101.6	35.0	50.0
	U-M12T	12mm UNILOK						
VBM14	U-12T	3/4" UNILOK		12.5	31.75	107.5	41.6	60.0
VBM15	U-16T	1" UNILOK		16.0	38.1	132.6	44.7	60.0
	U-M25T	25mm UNILOK						

Dimensions are for reference only and are subject to change without prior notice.

Specifications

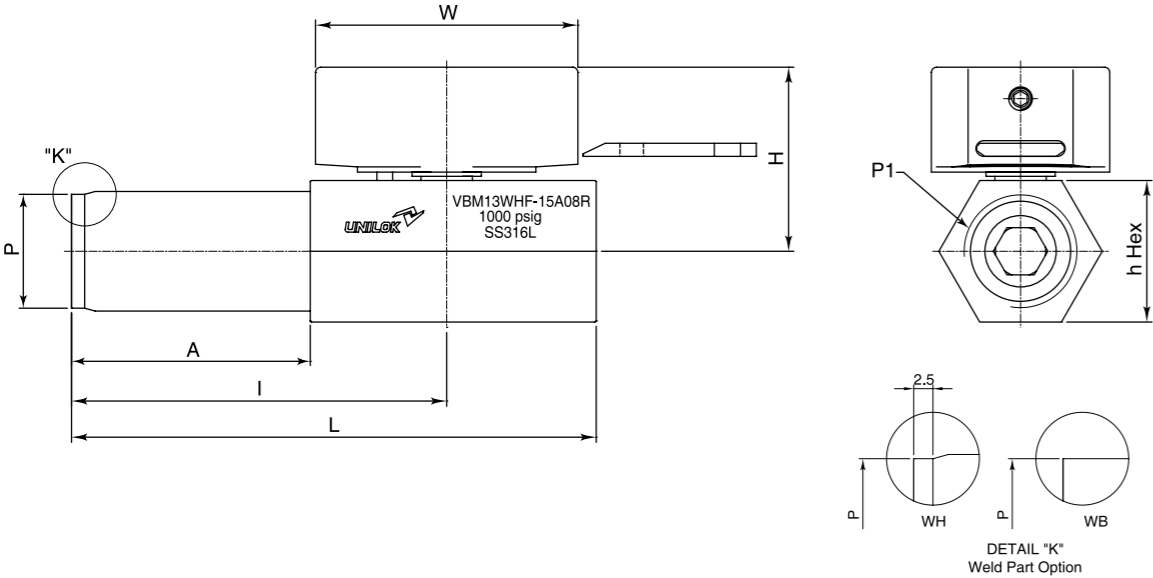
- Max Operating Pressure
1000 Psig (69 bar) at 38 °C(100 °F) with PTFE Seat
- Connection Type
Pipe Butt or Tube Butt Weld
Both NPT or ISO 7/1(PT) Female Threads
- Orifice
9.0mm to 16.0mm



INSTRUMENT

Ball Valves
VB3

Ordering Information & Dimensions



Part No.		End Connections		Orifice	Dimensions (mm)					
		Inlet(P)	Outlet(P1)		h (Hex)	A	I	L	H	W
VBM13	WHF-15A08R	15A Butt Weld	1/2 Female PT	9.0	26.98	45	71.5	100.0	35.0	50.0
VBM14	WHF-20A12R	20A Butt Weld	3/4 Female PT	12.5	31.75	45	73.5	105.0	41.6	60.0
VBM15	WHF-25A16R	25A Butt Weld	1 Female PT	16.0	38.1	45.0	81.0	120.0	44.7	60.0



Dimensions are for reference only and are subject to change without prior notice.

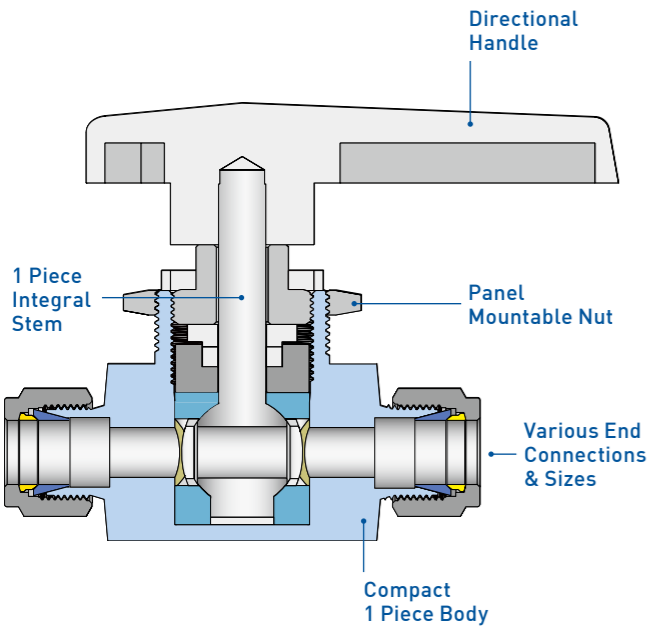
Ball Valves VB3

CONTENTS

Features	128	How To Order	129
Application	128	VB3 series	130
Testing	128	VB3X series	131
Cleaning	128	VB3C series	132
Important Notification	128	VB3CA series	133
Materials of Construction	129		

Features

- Pressure rating with standard PTFE seats 3000psig (206bar) only for the valves with orifice 4.8
- 2500psig (172bar) for the other valves
- Temperature rating from 10 °C(50 °F) to 65 °C(150 °F) with standard PTFE packing
- Compact designed one piece body to reduce space and possible leak point
- One piece integral ball stem to eliminate backlash and to encapsulate ball seats perfectly
- Panel mounting for easy installation
- Wide choice of end connections : UNILOK tube fittings, Female NPT or ISO7/1(PT) thread
- 2 way shut off valves and 3 way switching valves are available



Application

VB3, VB3X series ball valves with lowest dead volume is required in analytical purpose to prevent fluid entrapment which can cause contamination.

Sour Environment Services

UNILOK valves are comply with NACE MR-0175/ISO 15156 for sour oilfield application or NACE MR-0103 for petroleum refining operations.

To order, add-N to the end of part number.

Testing

Every valve is 100% factory tested with air and nitrogen at 1000psig(69bar) for leakage at the seat and packing. Each test is performed to a maximum allowable leak rate of 0.1scc/min.

Cleaning

UNILOK valves are free from machine oils, loose particles and grease throughout the close cleaning process.

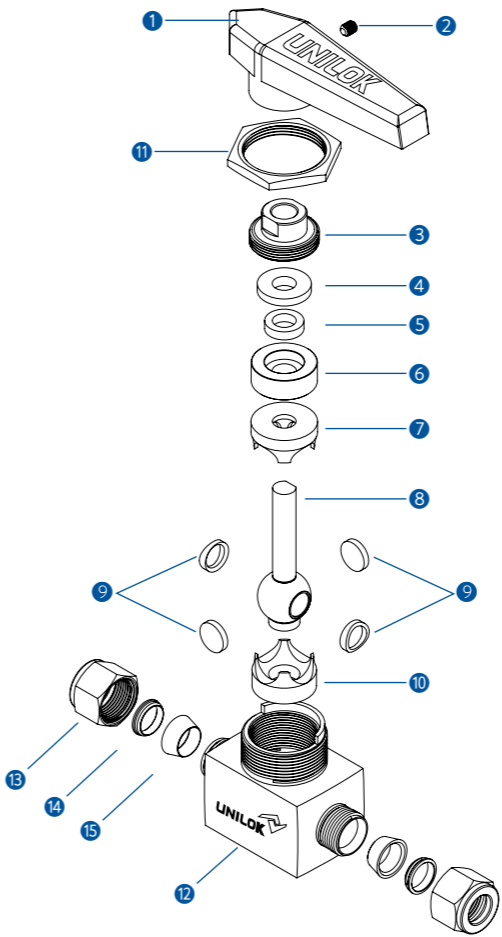
The special cleaning for high purity application is available upon request.

Important Notification

UNILOK ball valves are designed to be operated in a fully open or fully closed position.

The packing adjustment may be required during the valve’s service life.

Proper installation, materials compatibility, operation and maintenance of these valves are the responsibility of the user. The total system design must be taken into consideration to ensure optimal performance and safety.



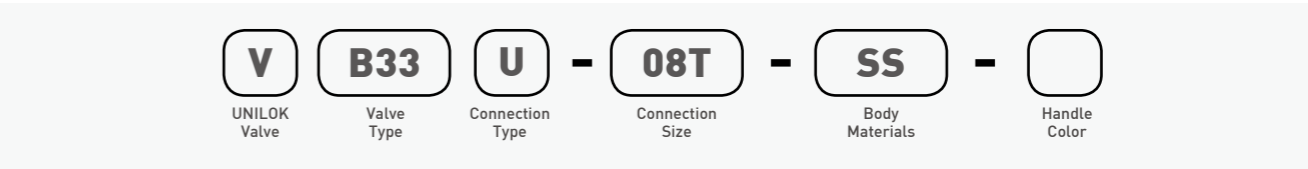
Materials of Construction

No.	Description	Materials	
Body Material		316SS	Brass
1	Handle	Nylon	
2	Set Screw	304SS	
3	Packing Bolt	316SS	Brass
4	Upper Gland	316 SS	
5	Lower Bushing	PTFE	
6	Lower Gland	316SS	
7	Upper Packing	PTFE	
8	Ball Stem	316 SS	
9	Side Disk	316 SS	
10	Lower Packing	PTFE	
11	Panel Nut	304SS	Brass
12	Body	316SS	Brass
13	Nut	316SS	Brass
14	Back Ferrule	316SS	Brass
15	Front Ferrule	316SS	Brass

How To Order

UNILOK VB3 series ball valves are ordered by part number as shown below.

Example: The following part number, **VB33U-08T-SS** is designated for VB3 series ball valve with both 1/2" UNILOK tube fitting, 316SS, PTFE seat.



Valve Type	
B3	2 Way Type
B3X	3 Way Type
B3C	Compact Type, 2 & 3 Way
B3CA	Compact Type, Angle Pattern

Connection Type	
U	UNILOK Tube Fitting
F	Female NPT or ISO7/1(PT)

Connection Size					
Fractional(Inch) Tube O.D. Designation					
Tube O.D.	inch	1/4	3/8	1/2	3/4
	mm	6.35	9.52	12.70	19.05
Designator		04T	06T	08T	12T

Metric Tube O.D. Designation					
Tube O.D.	mm	6	8	10	12
	Designator		M06T	M08T	M10T

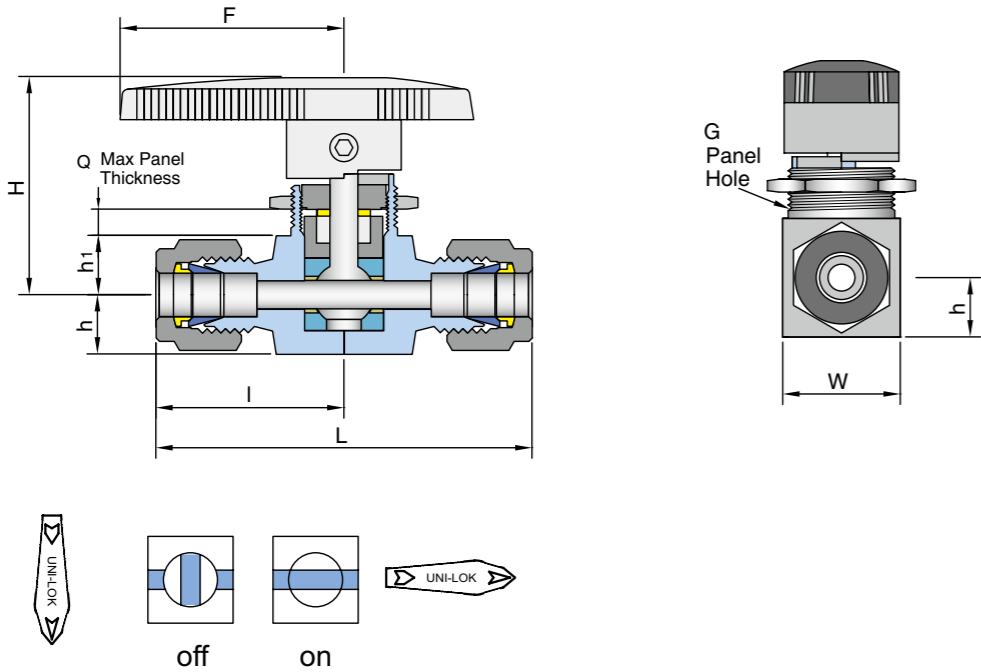
Pipe Size Designation (NPT or ISO7/1-PT)					
Pipe Size		1/8	1/4	3/8	1/2
Designator		02N/R	04N/R	06N/R	08N/R

Body Materials	
SS	316SS
BS	Brass

Colored directional handles are available only for VB3C series, compact type ball valves.

VB3 series

(2 Way, Shut-Off Both UNILOK Tube Fittings or Both Female Threads)



Ordering Information & Dimensions

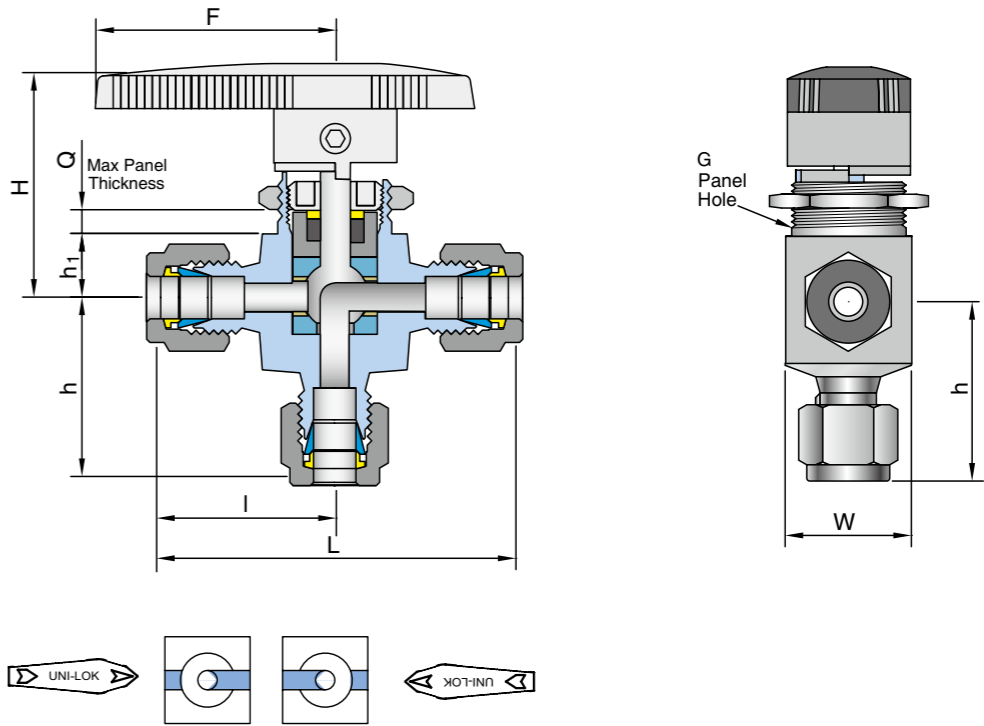
Part No.		End Connections		Orifice	CV	Dimensions (mm)								
		Inlet	Outlet			L	I	h	h1	H	G	Q	W	F
VB31	U-04T-	1/4" UNILOK		4.8	1.4	62.6	31.3	10.0	10.6	39.6	19.8	4.8	19.8	40.0
	U-06T-	3/8" UNILOK			1.5	66.6	33.3							
	U-M06T-	6mm UNILOK			1.4	62.6	31.3							
	U-M08T-	8mm UNILOK			1.5	65	32.5							
	F-02N-	1/8" Female NPT			1.2	50.8	25.4							
	F-04N-	1/4" Female NPT			0.9	52.4	26.2							
VB32	U-06T-	3/8" UNILOK		7.1	6.0	77.6	38.8	14.2	14.2	52.8	28.0	9.0	28.4	50.8
	U-M10T-	10mm UNILOK			6.0	77.8	38.9							
	F-04N-	1/4" Female NPT			3.0	63.6	31.8							
	F-06N-	3/8" Female NPT			2.6	63.6	31.8							
VB33	U-08T-	1/2" UNILOK		10.3	12.0	98.6	49.3	18.0	17.5	61.9	38.1	9.4	38.1	76.2
	U-12T-	3/4" UNILOK			6.4	99.2	49.6							
	U-M12T-	12mm UNILOK			12.0	98.8	49.4							
	U-M20T-	20mm UNILOK			6.4	100.0	50.0							
	F-08N-	1/2" Female NPT			6.3	80.0	40.0							

Female ISO7/1 Tapered Threads (PT) are available for all fractional sizes of VB3F series valves.
Add "R" as a suffix instead of "N".

Dimensions are for reference only and are subject to change without prior notice.

VB3X series

(3 Way, Switching UNILOK Tube Fittings or Female Threads)



Ordering Information & Dimensions

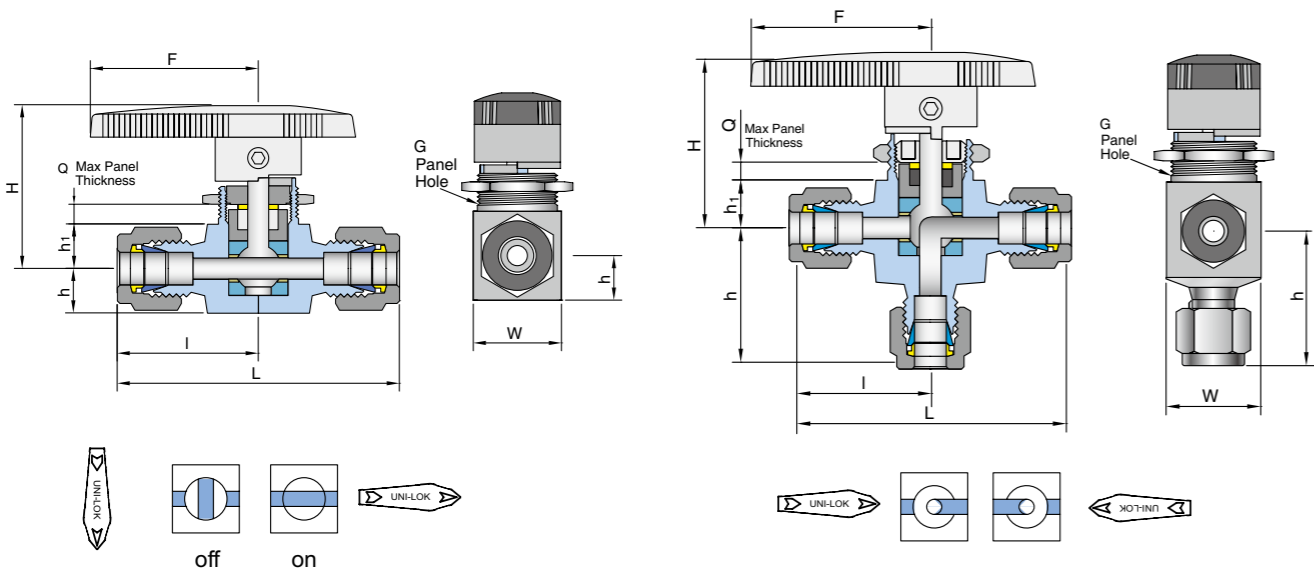
Part No.		End Connections		Orifice	CV	Dimensions (mm)								
		Inlet	Outlet			L	I	h	h ₁	H	G	Q	W	F
VB3X1	U-04T-	1/4" UNILOK		4.8	0.90	59.8	29.9	29.9	10.6	39.6	19.8	4.8	19.8	40.0
	U-M06T-	6mm UNILOK			0.90	59.8	29.9	29.9						
	U-M08T-	8mm UNILOK			0.80	62.6	31.3	31.2						
	F-04N-	1/4" Female NPT			0.75	52.4	26.2	26.2						
VB3X2	U-06T-	3/8" UNILOK		7.1	2.00	73.4	36.7	36.3	14.2	52.8	28.0	9.0	28.4	50.8
	U-M10T-	10mm UNILOK			2.00	73.2	36.6	35.8						
	F-04N-	1/4" Female NPT			1.70	63.6	31.8	31.8						
	F-06N-	3/8" Female NPT			1.50	63.6	31.8	31.8						
VB3X3	U-08T-	1/2" UNILOK		10.3	4.60	88.0	44.0	44.0	17.5	61.9	38.1	9.4	38.1	76.2
	U-M12T-	12mm UNILOK			4.80	88.0	44.0	44.0						
	F-08N-	1/2" Female NPT			3.50	79.2	39.6	39.6						

Female ISO7/1 Tapered Threads (PT) are available for all fractional sizes of VB3XF series valves.
Add "R" as a suffix instead of "N".

Dimensions are for reference only and are subject to change without prior notice.

VB3C series

[Compact Type Ball Valve 2 Way, Shut Off & 3 Way, Switching]



Ordering Information & Dimensions

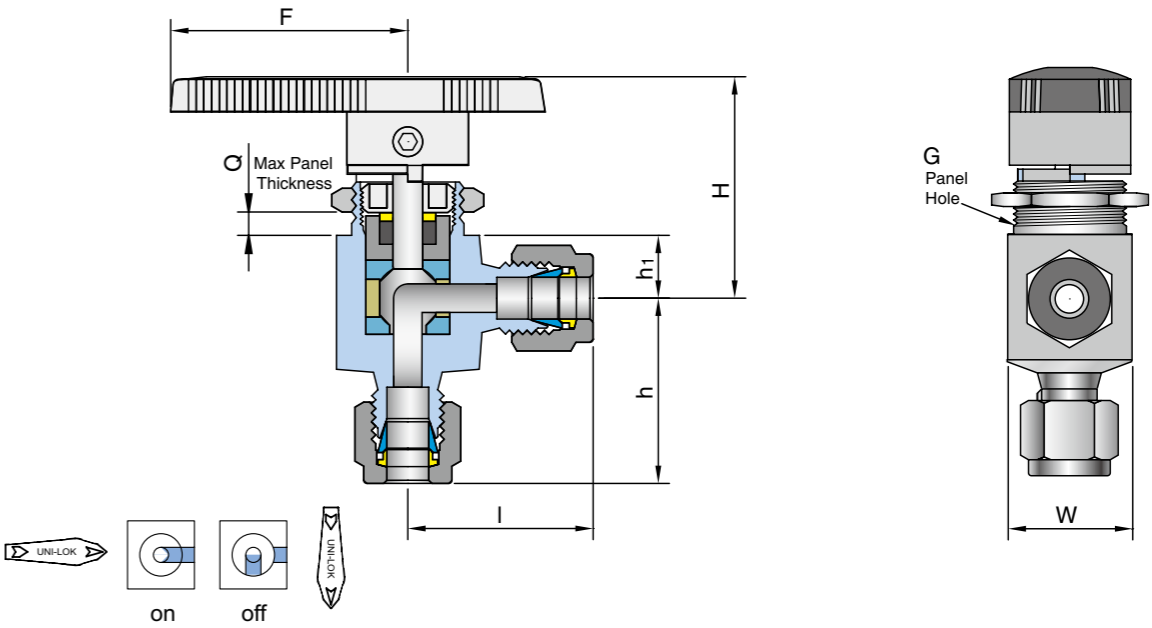
Part No.	End Connection		Orifice	CV	Dimensions (mm)								
	Inlet	Outlet			L	I	h	h ₁	H	G	Q	W	F
2 Way													
VB3CU-02T-	1/8" UNILOK		2.3	0.2	51.0	25.5	8.8	8.8	34.0	15.0	4.8	17.0	28.0
VB3CU-M03T-	3mm UNILOK			0.2	50.8	25.4							
VB3CU-04T-	1/4" UNILOK		3.2	0.6	55.4	27.7							
VB3CU-M06T-	6mm UNILOK			0.6	55.4	27.7							
VB3CF-02N-	1/8" Female NPT			0.5	41.2	20.6							
3 Way													
VB3CXU-02T-	1/8" Female NPT		2.3	0.15	51.0	25.5	24.8	8.8	34.0	15.0	4.8	17.0	28.0
VB3CXU-M03T-	3mm Female NPT				50.8	25.4	25.4						
VB3CXU-04T-	1/4" UNILOK		3.2	0.35	55.4	27.7	26.7						
VB3CXU-M06T-	6mm UNILOK				55.4	27.7	26.7						
VB3CXF-02N-	1/8" Female NPT				41.2	20.6	19.6						

Female ISO7/1 Tapered Threads (PT) are available for all fractional sizes of VB3CF and VB3CXF series valves.
Add "R" as a suffix instead of "N".

Dimensions are for reference only and are subject to change without prior notice.

VB3CA series

[Compact Type Ball Valve Angle Pattern]



Ordering Information & Dimensions

Part No.		End Connections		Orifice	CV	Dimensions (mm)							
		Inlet	Outlet			I	h	h1	H	G	Q	W	F
VB3CA	U-02T-	1/8" UNILOK		2.3	0.15	25.5	24.8	8.8	34.0	15.0	4.8	17.0	28.0
	U-M03T-	3mm UNILOK				25.4	25.4						
	U-04T-	1/4" UNILOK		26.7	26.7								
	U-M06T-	6mm UNILOK		26.7	26.7								
	F-02N-	1/8" Female NPT		20.6	20.6								

Female ISO7/1 Tapered Threads (PT) are available for all fractional sizes of VB3CAF series valves.
Add "R" as a suffix instead of "N".

Application

VB3C series valve with compact size, directional indication of flow and high flow capacity are required at sampling system, process instrument, equipment.

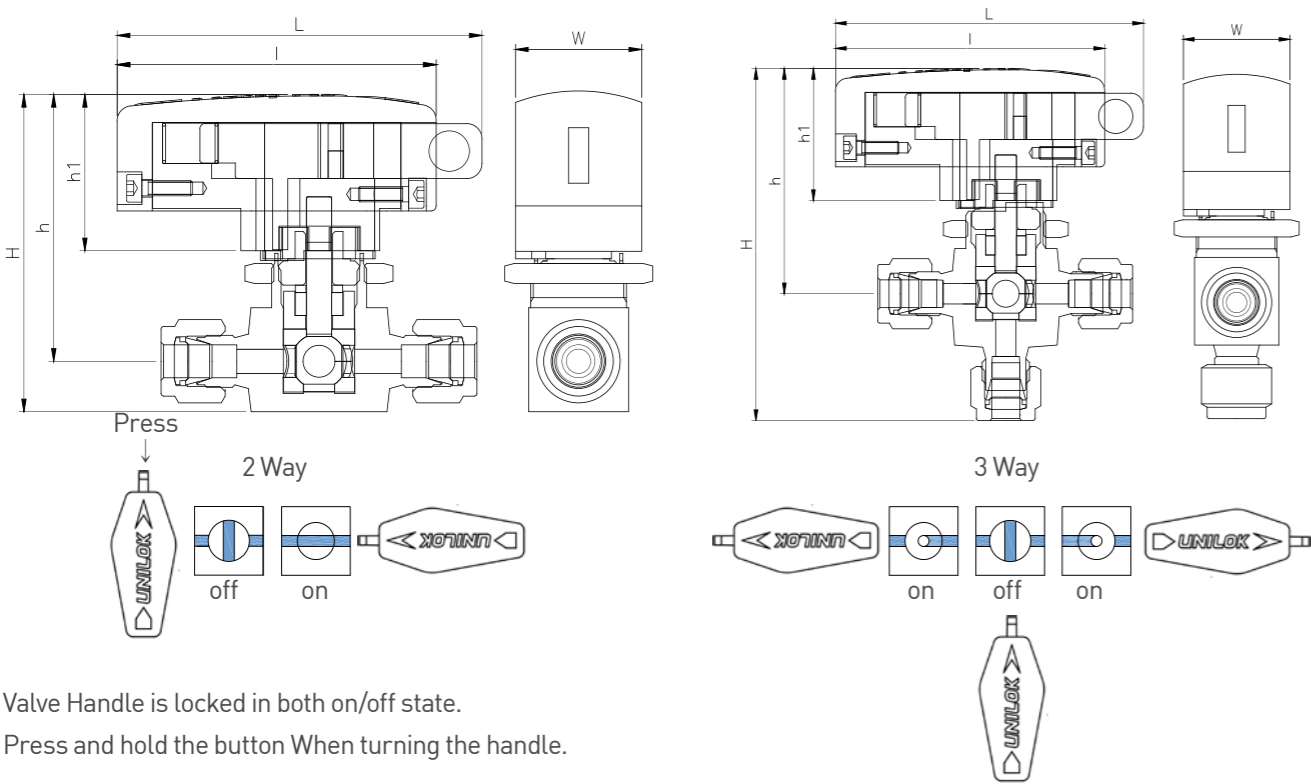
Dimensions are for reference only and are subject to change without prior notice.

INSTRUMENT

VB3-04 Lock Handle Series



VB3-04 Lock Handle Series



Valve Handle is locked in both on/off state.
Press and hold the button When turning the handle.

Ordering Information & Dimensions

Part Number		End Connection		Orifice	CV	Dimensions (mm)				
		Inlet	Outlet			L	I	h	h1	H
VB31	U-04T-	1/4" UNILOK		4.8	1.4	74.8	63.2	52.6	35.8	62.6
VB3X1	U-04T-				0.9					82.3

INSTRUMENT

High Pressure Ball Valves
VB6F



High Pressure Ball Valves VB6F

CONTENTS

Features

Materials of Construction

Application

Testing

Cleaning

Important Notification

138

138

139

139

139

139

How To Order

VB6F series

VB6FX series

Pressure-Temperature Ratings

Flow Rates

139

140

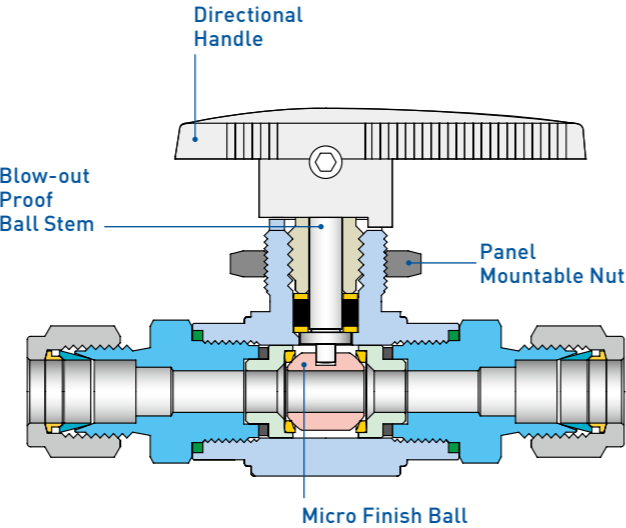
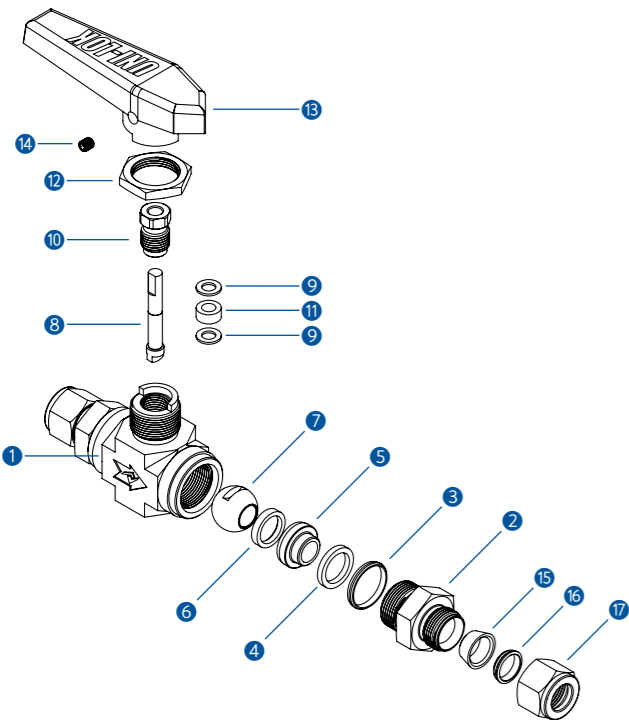
141

142

142

Features

- Pressure rating up to 6000psig (413bar) @21°C (70°F) with standard PCTFE seats
- Temperature rating from -54°C(-65°F) to 177°C (350°F) with standard PCTFE seats
- Compact forged body design
- Micro finished 316SS ball to provide a positive seal
- Blow-out proof design with internally loaded ball stem
- Low operating torques and positive handle stops
- Panel mounting for easy installation
- 2 way shut off valves and 3 way switching valves are available



Materials of Construction

No.	Description	Materials
1	Body	316SS
2	Connector	316SS
3	Connector O-ring	PTFE
4	Retainer Seal	PTFE
5	Seat Retainer	316SS
6	Ball Seat	PCTFE
7	Ball	316SS
8	Stem	316SS
9	Washer	304SS
10	Packing Bolt	304SS
11	Packing	PTFE
12	Panel Nut	316SS
13	Handle	Nylon
14	Bolt	304SS
15	Front Ferrule	316SS
16	Back Ferrule	316SS
17	Nut	316SS

Application

VB6F series valves are requiring in a wide range onshore and offshore applications to offer a safe and reliable performance.

Sour Environment Services

UNILOK valves are comply with NACE MR-0175/ISO 15156 for sour oilfield application or NACE MR-0103 for petroleum refining operations.
To order, add-N to the end of part number

Testing

Every valve is 100% factory tested with air and nitrogen at 1000psig(69bar) for leakage at the seat and packing. Each test is performed to a maximum allowable leak rate of 0.1scc/min.
Hydrostatic shell test to be performed at 1.5 time of the working pressure with optional.

How To Order

UNILOK VB6F series ball valves are ordered by part number as shown below.

Cleaning

UNILOK valves are free from machine oils, loose particles and grease throughout the close cleaning process.

Important Notification

UNILOK ball valves are designed to be operated in a fully open or fully closed position.
The packing adjustment may be required during the valve's service life.
Proper installation, materials compatibility, operation and maintenance of these valves are the responsibility of the user. The total system design must be taken into consideration to ensure optimal performance and safety.

Example: The following part number, *VB6F2U-04T-SS-PK* is designated for VB6F series ball valve with both 1/4" UNILOK tube fitting, 316SS, PEEK seat.

V

UNILOK Valve

B6F2

Valve Type

U

Connection Type

-

04T

Connection Size

-

SS

Body Materials

-

PK

Seat Materials

Other alloys are available upon request

Valve Type	
B6F	2 Way Type
B6FX	3 Way Type

Connection Type	
U	UNILOK Tube Fitting
F	Female NPT or ISO7/1(PT)
M	Male NPT or ISO7/1(PT)

Connection Size						
Fractional(Inch) Tube O.D. Designation						
Tube O.D.	inch	1/8	1/4	3/8	1/2	3/4
	mm	3.17	6.35	9.53	12.70	19.05
Designator		02T	04T	06T	08T	12T

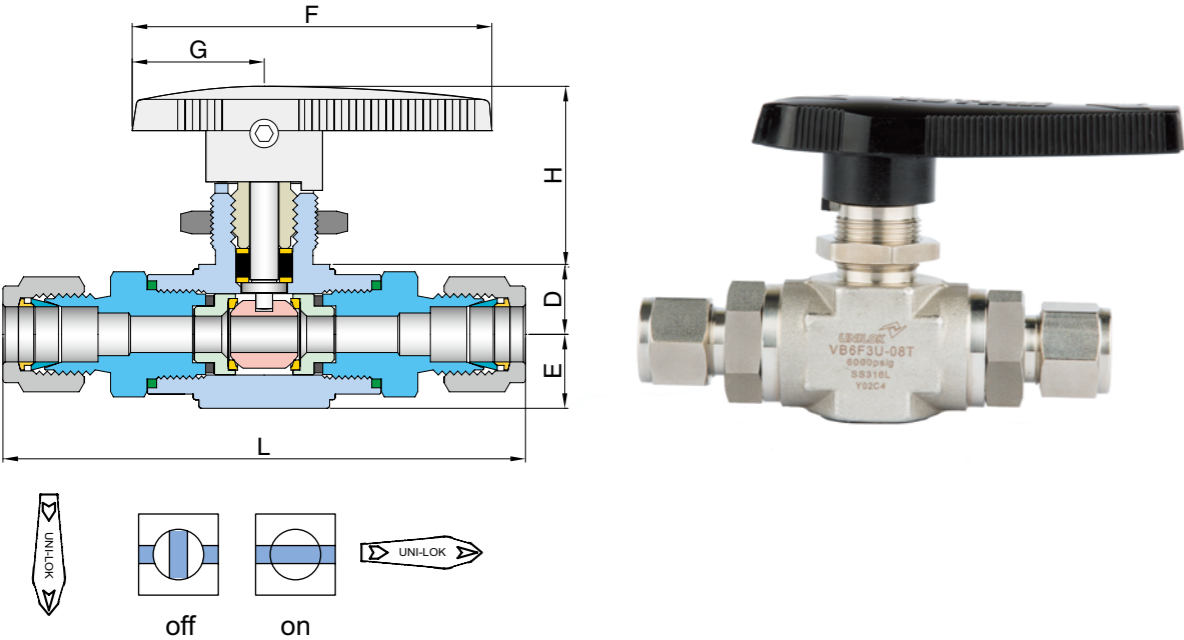
Metric Tube O.D. Designation						
Tube O.D.	mm	3	6	8	10	12
Designator		M03T	M06T	M8T	M10T	M12T

Pipe Size Designation (NPT or ISO7/1-PT)				
Pipe Size	1/8	1/4	3/8	1/2
Designator	02N/R	04N/R	06N/R	08N/R

Seat Materials	
None	PCTFE
PK	PEEK

VB6F series

(2 Way, Shut-Off Both UNILOK Tube Fittings or Both Female or Male Threads)



Ordering Information & Dimensions

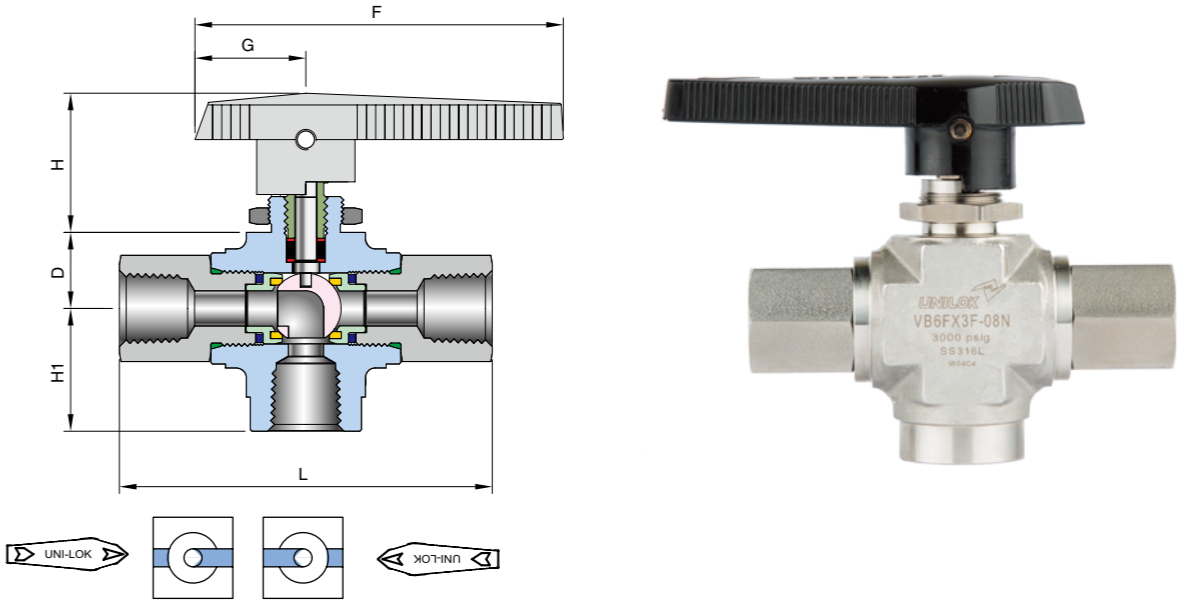
Part Number		End Connections		Orifice	CV	Dimensions (mm)						Panel Hole Drill Size
		Inlet	Outlet			L	E	D	H	F	G	
VB6F1	U-04T-	1/4" UNILOK		4.2	0.93	74.4	9.5	8.4	23.2	46.0	17.4	14.7
	F-02N-	1/8" Female NPT				54.2						
	M-04N-	1/4" Male NPT				68.6						
VB6F2	U-04T-	1/4" UNILOK		6.4	1.04	88.7	13.0	12.3	31.8	63.2	23.2	19.6
	U-06T-	3/8" UNILOK				91.4						
	U-M06T-	6mm UNILOK				88.7						
	U-M08T-	8mm UNILOK				91.0						
	U-M10T-	10mm UNILOK				92.3						
	F-04N-	1/4" Female NPT				77.0						
	M-04N-	1/4" Male NPT				82.2						
	M-06N-	3/8" Male NPT				82.2						
	VB6F3	U-08T-	1/2" UNILOK			10.3						
U-12T-		3/4" UNILOK		118.4								
U-M12T-		12mm UNILOK		9.5	5.57	118.9						
F-06N-		3/8" Female NPT				98.9						
F-08N-		3/8" Female NPT		10.3	6.42	109.2						
M-08N-		1/2" Male NPT				112.8						

ISO7/1 Tapered Threads (PT) are available for all fractional sizes of VB6F series valves.
Add "R" as a suffix instead of "N".

Dimensions are for reference only and are subject to change without prior notice.

VB6FX series

(3 Way, Switching UNILOK Tube Fittings or Female or Male Threads)



Ordering Information & Dimensions

Part Number		End Connections		Orifice	CV	Dimensions (mm)						Panel Hole Drill Size
		Inlet	Outlet			L	H1	D	H	F	G	
VB6FX1	U-04T-	1/4" UNILOK		4.2	0.93	74.6	39	8.4	23.2	46.0	17.6	14.7
	F-02N-	1/8" Female NPT				54.2	28.8					
	M-04N-	1/4" Male NPT				68.6	29.9					
VB6FX2	U-04T-	1/4" UNILOK		4.8	1.04	88.7	40.3	12.3	31.8	63.2	23.2	19.6
	U-06T-	3/8" UNILOK		6.4	2.34	91.4	40.3					
	U-M06T-	6mm UNILOK				88.7	40.4					
	U-M08T-	8mm UNILOK				91.0	40.5					
	U-M10T-	10mm UNILOK				93.0	40.6					
	F-04N-	1/4" Female NPT				77.0	33.0					
	M-04N-	1/4" Male NPT				82.2	33.0					
	M-06N-	3/8" Male NPT				82.2	33.0					
	VB6FX3	U-08T-	1/2" UNILOK			10.3	6.42					
U-12T-		3/4" UNILOK		118.4	57.1							
U-M12T-		12mm UNILOK		10.3	6.42	118.8	57.1					
F-06N-		3/8" Female NPT				98.9	47.0					
F-08N-		1/2" Female NPT				109.2	36					
M-08N-		1/2" Male NPT				112.8	47.0					

ISO7/1 Tapered Threads (PT) are available for all fractional sizes of VB6FX series valves.
Add "R" as a suffix instead of "N".

Dimensions are for reference only and are subject to change without prior notice.

Pressure - Temperature Ratings

Valve Group	Sealing Materials			Pressure Rating	Temperature Rating
	Seat	Stem Packing	End Seal		
2 Way					
VB6F1	PCTFE	PTFE	PTFE	6000psig(413bar)	-22°F~-355°F (-30°C~180°C)
VB6F2	PEEK			6000psig(413bar)	-65°F~446°F (-54°C~230°C)
VB6F3					
3 Way					
VB6FX1	PCTFE	PTFE	PTFE	4000psig(275bar)	-22°F~-355°F (-30°C~180°C)
	PEEK			6000psig(413bar)	-65°F~446°F (-54°C~230°C)
VB6FX2	PCTFE	PTFE	PTFE	3000psig(206bar)	-9°F~320°F (-23°C~160°C)
VB6FX3	PEEK			4000psig(275bar)	-54°F~410°F (-35°C~210°C)

Flow Rates

Pressure Drop(Δp) to Atmosphere in psig		Cv													
		0.06	0.18	0.21	0.26	0.63	0.7	0.87	0.93	1.04	2.34	3.46	3.62	5.57	6.42
Air @70°F(21°C) SCFM	10	5.9	17.7	20.7	25.6	62.0	68.9	85.6	91.5	102.4	230.3	340.6	356.3	548.2	631.9
	50	13.2	39.6	46.2	57.2	138.7	154.1	191.5	204.7	228.9	515.0	761.5	796.7	1225.9	1413.0
	100	18.7	56.0	65.4	80.9	196.1	217.9	270.8	289.5	323.7	728.3	1077.0	1126.8	1733.7	1998.3
Water @60°F(16°C) US GPM	10	0.2	0.6	0.7	0.8	2.0	2.2	2.8	2.9	3.3	7.4	10.9	11.5	17.6	20.3
	50	0.4	1.3	1.5	1.8	4.5	4.9	6.2	6.6	7.4	16.5	24.5	25.6	39.4	45.4
	100	0.6	1.8	2.1	2.6	6.3	7.0	8.7	9.3	10.4	23.4	34.6	36.2	55.7	64.2

Flow rate calculated with 1000psig(69bar) inlet pressure.
To determine m3/hr, multiply SCFM by 1.69 and US GPM by 0.227.
SCFM : Standard Cubic Feet per Minute. US GPM : Gallons Per Minute

INSTRUMENT

High Pressure
Bar Stock Ball Valves
VB6B



High Pressure Bar Stock Ball Valves VB6B

CONTENTS

Features

Materials of Construction

CNG Application

Application

Testing

Cleaning

Important Notification

144

144

144

145

145

145

145

How To Order

VB6B series

VB6BX series

Pressure-Temperature Ratings

Valve Actuation Torque

Panel Mounting

145

146

147

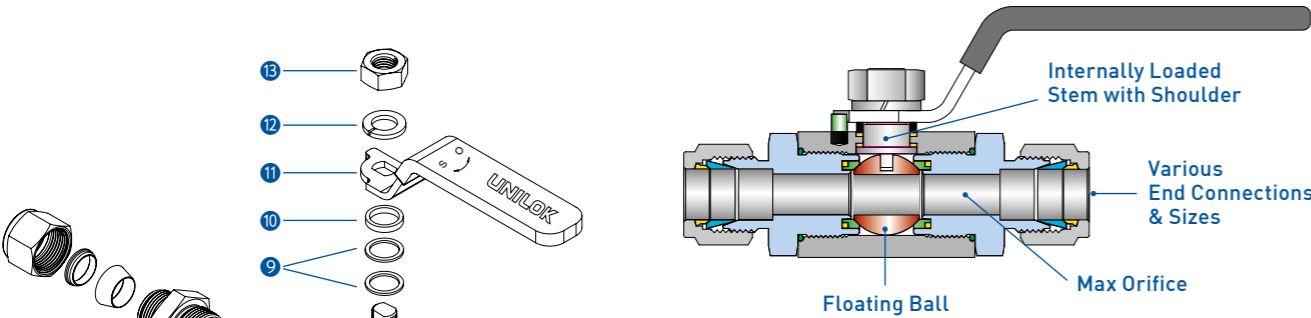
148

148

148

Features

- Pressure rating up to 6000psig [413bar] @21°C(70) with standard PCTFE seats
- 10000psig [689bar] @21°C(70°F) with optional PEEK seats for CNG application
- Temperature rating from -30°C(-22°F) to 180°C [355°F] with standard PCTFE seats
- Robust body for high pressure application
- Floating ball design ensures leak proof shut-off at high pressure
- Blow-out proof design with internally loaded ball stem with shoulder
- Lever handle with PVC coat allows easy and quick operation with low torque and 1/4 turn to open and close
- Max orifice minimizes the pressure drop Panel mounting is available as optional
- 2 way shut off valves and 3 way switching valves are available



VB6BC Series Valves for CNG Application

VB6BC series valves with live loaded compensation ring seats and CNG compatible materials provide a proper sealing at low and high pressure CNG application. The CNG compatible materials listed in red are standard materials for VB6BC series valves.

⑥ PEEK : Ball Seats ⑤ PCTFE : Ring Seats ④ H-NBR : O-rings

To order, add C next to valve series number.
Example : VB6BC2U-12T-SS.

Materials of Construction

No.	Description	Materials
1	Body	316SS
2	Pin	304SS
3	Connector	316SS
4	O-Ring	FKM
5	Ring Seat	PTFE
6	Ball Seat	PCTFE
7	Ball	316SS
8	Stem	316SS
9	Packing	PTFE
10	Bushing	316SS
11	Handle	304SS+PVC
12	Spring Washer	304SS
13	Nut	304SS
14	Front Ferrule	316SS
15	Back Ferrule	316SS
16	Nut	316SS

Application

Internally live loaded ball stem to ensure sealing at low and high pressure CNG application .
PEEK and PCTFE seats are compatible with CNG
VB6B series valves are requiring in a wide range onshore and offshore applications to offer a safe and reliable perform.

Sour Environment Services

UNILOK valves are comply with NACE MR-0175/ISO 15156 for sour oilfield application or NACE MR-0103 for petroleum refining operations.
To order, add-N to the end of part number.

Testing

Every valve is 100% factory tested with air and nitrogen at 1000psig[69bar] for leakage at the seat and packing. Each test is performed to a maximum allowable leak rate of 0.1scc/min.
Hydrostatic shell test to be performed at 1.5 time of the working pressure is available as optional.

How To Order

UNILOK VB6B series ball valves are ordered by part number as shown below.

Cleaning

UNILOK valves are free from machine oils, loose particles and grease throughout the close cleaning process.

Important Notification

UNILOK ball valves are designed to be operated in a fully open or fully closed position.
The packing adjustment may be required during the valve's service life.
Proper installation, materials compatibility, operation and maintenance of these valves are the responsibility of the user. The total system design must be taken into consideration to ensure optimal performance and safety.

Example: The following part number, *VB6B3U-16T-SS* is designated for VB6B series ball valve with both 1" UNILOK tube fitting, 316SS, PCTFE seat.

V

UNILOK Valve

B6B3

Valve Type

U

Connection Type

-

16T

Connection Size

-

SS

Body Materials

-

Seat Materials

Other alloys are available upon request

Valve Type	
B6B	2 Way Type
B6BC	2 Way Type, CNG Appliacon
B6BX	3 Way Type

Connection Size						
Fractional(Inch) Tube O.D. Designation						
Tube O.D.	inch	1/4	3/8	1/2	3/4	1
	mm	6.35	9.52	12.70	19.05	25.40
Designator		04T	06T	08T	12T	16T

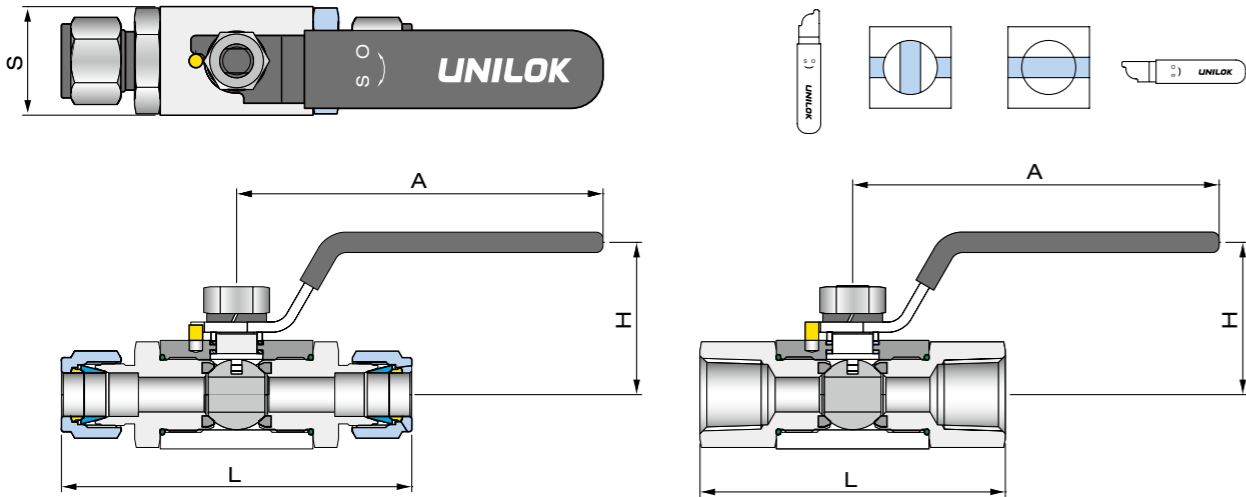
Seat Materials	
None	PCTFE
PK	PEEK

Pipe Size Designation (NPT or ISO7/1-PT)					
Pipe Size	1/4	3/8	1/2	3/4	1
Designator	04N/R	06N/R	08N/R	12N/R	16N/R

Connection Type	
U	UNILOK Tube Fitting
F	Female NPT or ISO7/1(PT)
M	Male NPT or ISO7/1(PT)

VB6B series

(2 Way, Shut-Off Both UNILOK Tube Fittings or Both Female or Male Threads)



Ordering Information & Dimensions

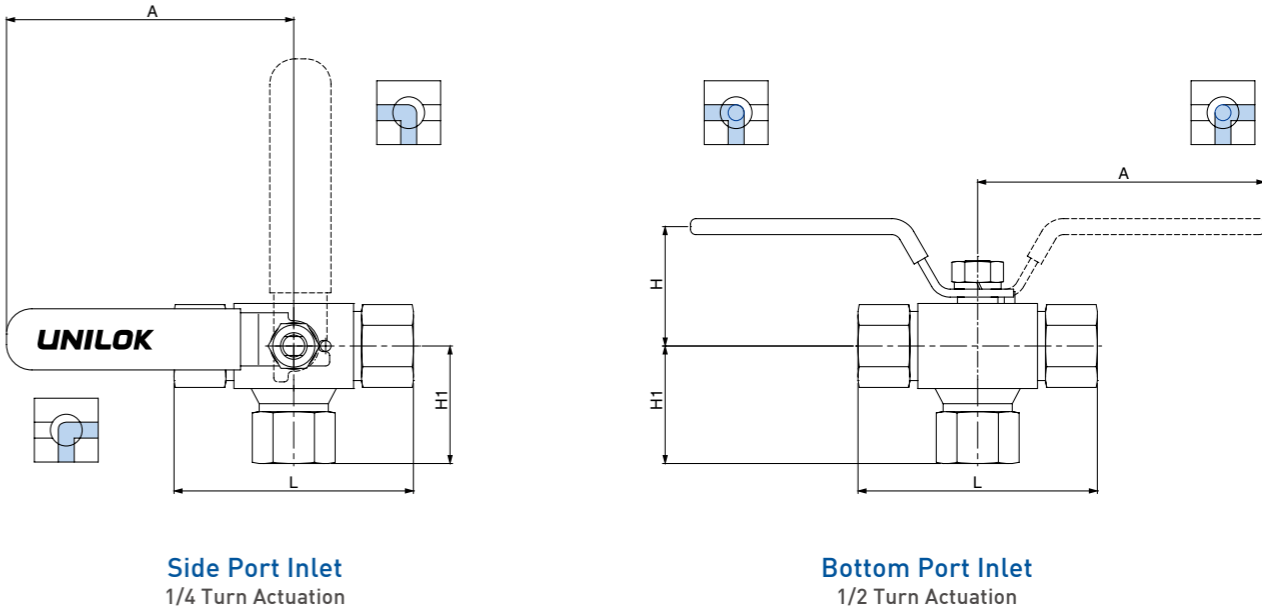
Part No.		End Connections		Orifice	CV	Dimensions (mm)			
		Inlet	Outlet			L	S	H	A
VB6B1	U-04T-	1/4" UNILOK		4.8	1.2	92.0	32.0	45.0	108.0
	U-06T-	3/8" UNILOK		7.1	3.7	95.0			
	U-08T-	1/2" UNILOK		10.0	7.5	103.0			
	F-04N-	1/4" Female NPT				70.0			
	F-06N-	3/8" Female NPT				75.0			
	F-08N-	1/2" Female NPT				90.0			
	M-04N-	1/4" Male NPT		7.1	3.7	85.0			
	M-06N-	3/8" Male NPT		9.7	7.2	85.0			
	M-08N-	1/2" Male NPT		10.0	7.5	85.0			
VB6B2	U-12T-	3/4" UNILOK		12.7	10.0	110.6	40.0	55.0	148.0
	F-08N-	1/2" Female NPT				90.0			
	F-12N-	3/4" Female NPT				98.0			
	M-12N-	3/4" Male NPT				105.0			
VB6B3	U-12T-	3/4" UNILOK		19.0	30.0	118.6	50.0	60.0	148.0
	U-16T-	1" UNILOK				127.5			
	F-12N-	3/4" Female NPT		15.8	19.0	95.0			
	F-16N-	1" Female NPT		19.0	30.0	106.0			
	M-12N-	3/4" Male NPT		15.8	19.0	115.0			
	M-16N-	1" Male NPT		19.0	30.0	125.0			

ISO7/1 Tapered Threads (PT) are available for all fractional sizes of VB6B series valves.
Add "R" as a suffix instead of "N".

Dimensions are for reference only and are subject to change without prior notice.

VB6BX series

(3 Way, Switching UNILOK Tube Fittings or Female or Male Threads)



Ordering Information & Dimensions

Part No.		End Connections		Orifice	Dimensions (mm)				
		Inlet	Outlet		L	S	H	H ₁	A
VB6BXB1	U-04T-	1/4" UNILOK		4.8	92.0	32.0	44.9	53.5	108.0
	U-06T-	3/8" UNILOK		7.1	95.0			55.0	
	U-08T-	1/2" UNILOK		10.0	106.0			57.5	
	F-04N-	1/4" Female NPT			72.0			36.7	
	F-06N-	3/8" Female NPT			75.0			40.2	
	F-08N-	1/2" Female NPT			89.0			44.2	
VB6BXB2	U-12T-	3/4" UNILOK		12.7	115.0	40.0	55.0	65.5	148.0
	F-08N-	1/2" Female NPT			93.0			49.7	
	F-12N-	3/4" Female NPT			102.0			55.2	
VB6BXB3	U-12T-	3/4" UNILOK		15.8	125.0	50.0	60.0	70.0	148.0
	U-16T-	1" UNILOK		20.0	134.0			76.6	
	F-12N-	3/4" Female NPT			119.0			56.7	
	F-16N-	1" Female NPT			129.0			60.8	

Female ISO7/1 Tapered Threads (PT) are available for all fractional sizes of VB6BX series valves.
Add "R" as a suffix instead of "N".

Bottom and Side Port Entry Valve Ordering Information

To order side port entry valve, replace **B** with **S**

Examples : **VB6BXB1U-04T-SS**, **VB6BXS1U-04T-SS**

Dimensions are for reference only and are subject to change without prior notice.

Pressure-Temperature Ratings

Valve Group	Sealing Materials			Pressure Rating	Temperature Rating
	Seat	Stem Packing	End Seal		
2 Way					
VB6B1	PCTFE	PTFE	FKM	6000psig(413bar)	-22°F~320°F (-30°C~160°C)
	PEEK			10000psig(689bar)	-40°F~446°F (-40°C~230°C)
VB6B2	PCTFE	PTFE	FKM	5000psig(344bar)	-10°F~320°F (-23°C~160°C)
VB6B3	PEEK			6000psig(413bar)	-10°F~376°F (-23°C~191°C)
3 Way					
VB6BX1	PCTFE	PTFE	FKM	4000psig(275bar)	-22°F~320°F (-30°C~160°C)
	PEEK			6000psig(413bar)	-40°F~446°F (-40°C~230°C)
VB6BX2	PCTFE	PTFE	FKM	3000psig(206bar)	-10°F~320°F (-23°C~160°C)
VB6BX3	PEEK			4000psig(275bar)	-10°F~376°F (-23°C~191°C)

Valve Actuation Torque

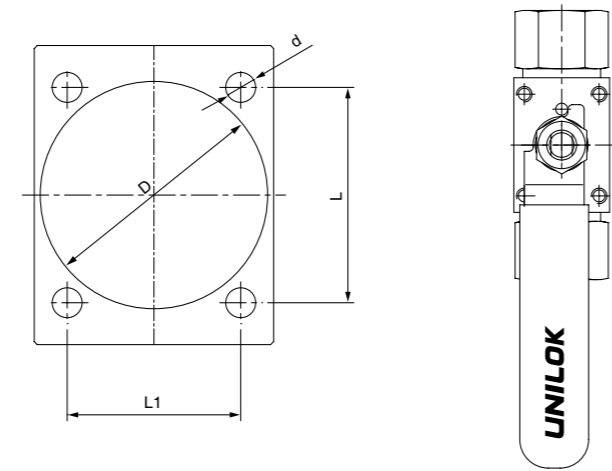
Valve Group	Pressure (psig)		
	0	5000	6000
Way	Torque (Nm)		
VB6B1	3.92	-	6.37
VB6B2	7.35	10.30	-
VB6B3	12.26	19.61	-
	0	3000	4000
3 Way	Torque (Nm)		
VB6BX1	3.92	-	4.90
VB6BX2	7.35	7.85	-

Panel Mounting

Screw hole panel mounting is available with four screw holes on the top of VB6B series valves, M4 x 6mm depth.

To order, add -M to end of part number.

Disassemble the handle before panel mounting.



Valve Group	Dimensions(mm)			
	L	L ₁	d	D
VB6B1	34	25	5	30
VB6B2	36	29	5	38
VB6B3	40	35	5	38

Best Engineering For You

INSTRUMENT

Trunnion Ball Valve VBT Series



Trunnion Ball Valve

CONTENTS

Features

Testing

Cleaning

Materials of Construction

152

152

152

152

How to Order

Ordering Information & Dimensions

Pressure-Temperature Ratings

153

154

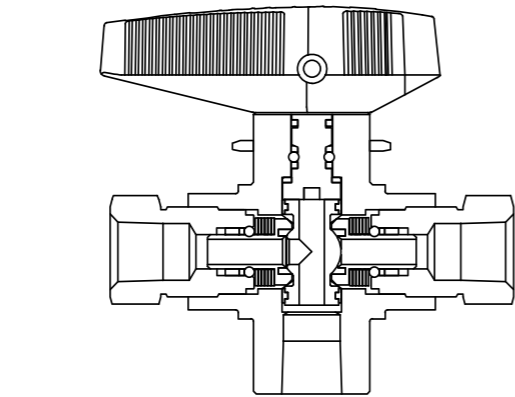
156

Features

- Design Spec : ANSI / ASME B16.34
- 2- or 3-way flow patterns
- Panel mount
- Low operating torque
- Temperature rating from -17 °C(-0 °F) to 37 °C(100 °F) with standard PCTFE seats
- Pressure rating up to 6000Psig(413Bar) @21°C(70 °F) with Standard PCTFE seats.

Testing

- Every Valve is 100% factory tested with air and nitrogen at 1000psig(69bar) for leakage at the seat and packing.
- Each test is performed to a maximum allowable leak rate of 0.1 scc/min.
- Hydrostatic shell test to be performed at 1.5 time of the working pressure with optional.



Cleaning

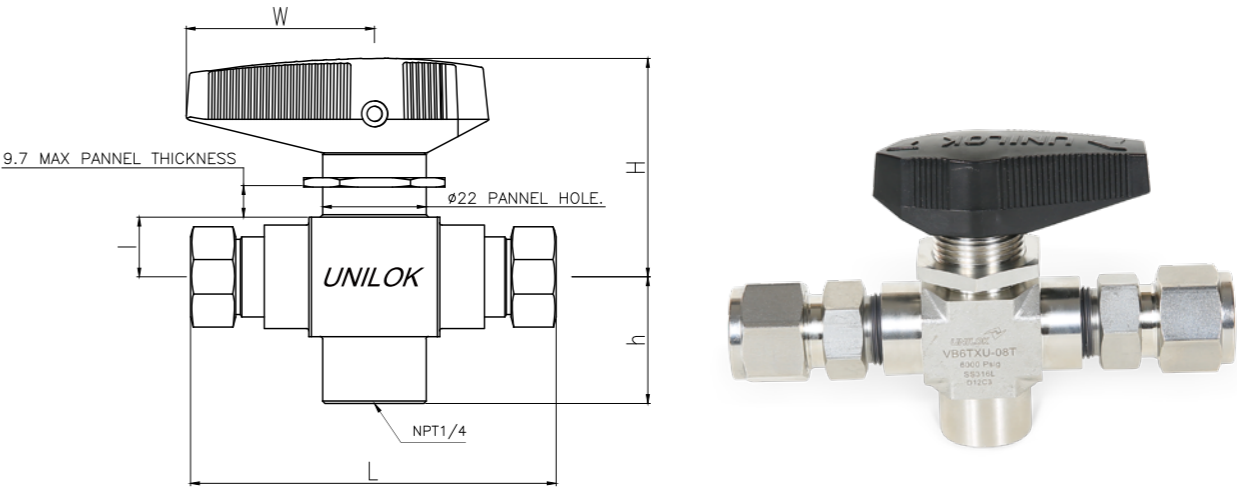
UNILOK valves are free from machine oils, loose particles and grease throughout the close cleaning process.

Materials of Construction

No.	Description	Materials	EA
1	Body	SUS316	1
2	Seat Spring	SUS304	12
3	O-Ring	FKM	2
4	Seat Carrier Backup Ring	PTFE	4
5	Seat Carrier Guide	SUS316	2
6	End Screw	SUS316	2
7	End Screw Seal	PTFE	2
8	Seat Carrier	SUS316	1
9	Seat	PCTFE	2
10	Stem Set Screw	PCTFE	1
11	Stem	SUS316	1
12	Ball	SUS316	1
13	Trunnion Bearing	PEEK	2
14	Stem Bearing	PEEK	1
15	O-Ring	FKM	1
16	Secondary Stem Backup Ring	PTFE	2
17	Primary Stem Backup Ring	PTFE	1
18	Panel Nut	SUS316	1
19	Handle	Nylon66	1

How to Order

UNILOK VBT Series ball Valve are ordered by part number as shown below.



V

UNILOK

B6TX

Valve Type

U

Connection Type

-

04N

Connection Size

-

SS

Body Materials

-

Seat Materials

Valve Type	
B6T	2 WAY / Orifice 4.75mm
B6TX	3 WAY / Orifice 4.75mm
B10T	2 WAY / Orifice 4.75mm
B10TX-	3 WAY / Orifice 4.75mm

Connection Type	
U	UNILOK Tube Fitting
F	Female NPT or ISO7/1(PT)

Connection Size				
Fractional(Inch) Tube O.D. Designation				
Tube O.D.	inch	1/4	3/8	1/2
	mm	6.35	9.52	12.7
Designator		04T	06T	08T

Connection Size			
Female NPT or ISO7/1(PT)			
Size	1/4	3/8	1/2
Designator	04N	06N	08N

Connection Size				
Fractional(Inch) Tube O.D. Designation				
Tube O.D.	inch	1/4	3/8	1/2
	mm	6.35	9.52	12.7
Designator		04T	06T	08T

Body Materials	
SS	316SS

Stem Type	
None	Vee Stem
R	Regulating Stem

Ordering Information & Dimensions

2way (PCTFE)									
Part Number		End Connection	Orifice	CV	Dimensions mm(in.)				
			mm		L	I	H	H	W
VB6T	F-02N-SS	1/8 Female NPT	4.75	1.2	74.7(2.94)	12.7	46.6	26.9	39.9
	F-04N-SS	1/4 Female NPT		1.0	74.7(2.94)				
	F-08N-SS	1/2 Female NPT		1.2	99.8(3.93)				
	U-04T-SS	1/4" UNILOK		1.6	105(4.14)				
	U-06T-SS	3/8" UNILOK		1.4	112(4.39)				
	U-08T-SS	1/2" UNILOK		1.0	117(4.60)				
	U-M06T-SS	6mm UNILOK		1.6	105(4.14)				
	U-M08T-SS	8mm UNILOK		1.5	105(4.14)				
	U-M10T-SS	10mm UNILOK		1.3	112(4.41)				
	U-M12T-SS	12mm UNILOK		1.0	117(4.60)				

2way (PEEK)										
Part Number		End Connection	Working Pressure psig(bar)	Orifice	CV	Dimensions mm(in.)				
				mm		L	I	H	H	W
VB10T	F-02N-SS-PK	1/8 Female NPT	10000(689)	4.75	1.2	74.7(2.94)	12.7	46.6	26.9	39.9
	F-04N-SS-PK	1/4 Female NPT	10000(689)		1.0	99.8(3.93)				
	U-04T-SS-PK	1/2 Female NPT	10000(689)		1.6	105(4.14)				
	U-06T-SS-PK	1/4" UNILOK	7500(516)		1.4	112(4.39)				
	U-08T-SS-PK	3/8" UNILOK	6700(461)		1.0	117(4.60)				
	U-M06T-SS-PK	1/2" UNILOK	10000(689)		1.6	105(4.14)				
	U-M08T-SS-PK	6mm UNILOK	7500(516)		1.5	105(4.15)				
	U-M10T-SS-PK	8mm UNILOK	8400(578)		1.3	112(4.41)				
	U-M12T-SS-PK	10mm UNILOK	6600(454)		1.0	117(4.60)				

Ordering Information & Dimensions

3way (PCTFE)									
Part Number		End Connection	Orifice	CV	Dimensions mm(in.)				
			mm		L	I	H	H	W
VB6TX	F-04N-SS	1/4 Female NPT	4.75	0.75	74.7(2.94)	12.7	46.6	26.9	39.9
	F-06N-SS	3/8 Female NPT			74.7(2.94)				
	U-04T-SS	1/4" UNILOK			105(4.14)				
	U-06T-SS	3/8" UNILOK			112(4.39)				
	U-08T-SS	1/2" UNILOK			117(4.60)				
	U-M06T-SS	6mm UNILOK			105(4.14)				
	U-M08T-SS	8mm UNILOK			105(4.15)				
	U-M10T-SS	10mm UNILOK			112(4.41)				
	U-M12T-SS	12mm UNILOK			117(4.60)				

3way (PEEK)										
Part Number		End Connection	Working Pressure psig(bar)	Orifice	CV	Dimensions mm(in.)				
				mm		L	I	H	H	W
VB10TX	F-04N-SS-PK	1/4 Female NPT	10000(689)	4.75	0.75	74.7(2.94)	12.7	46.6	26.9	39.9
	F-06N-SS-PK	3/8 Female NPT	10000(689)			74.7(2.94)				
	U-04T-SS-PK	1/4" UNILOK	10000(689)			105(4.14)				
	U-06T-SS-PK	3/8" UNILOK	7500(516)			112(4.39)				
	U-08T-SS-PK	1/2" UNILOK	6700(461)			117(4.60)				
	U-M06T-SS-PK	6mm UNILOK	10000(689)			105(4.14)				
	U-M08T-SS-PK	8mm UNILOK	7500(516)			105(4.15)				
	U-M10T-SS-PK	10mm UNILOK	8400(578)			112(4.41)				
	U-M12T-SS-PK	12mm UNILOK	6600(454)			117(4.60)				

Pressure-Temperature Ratings

